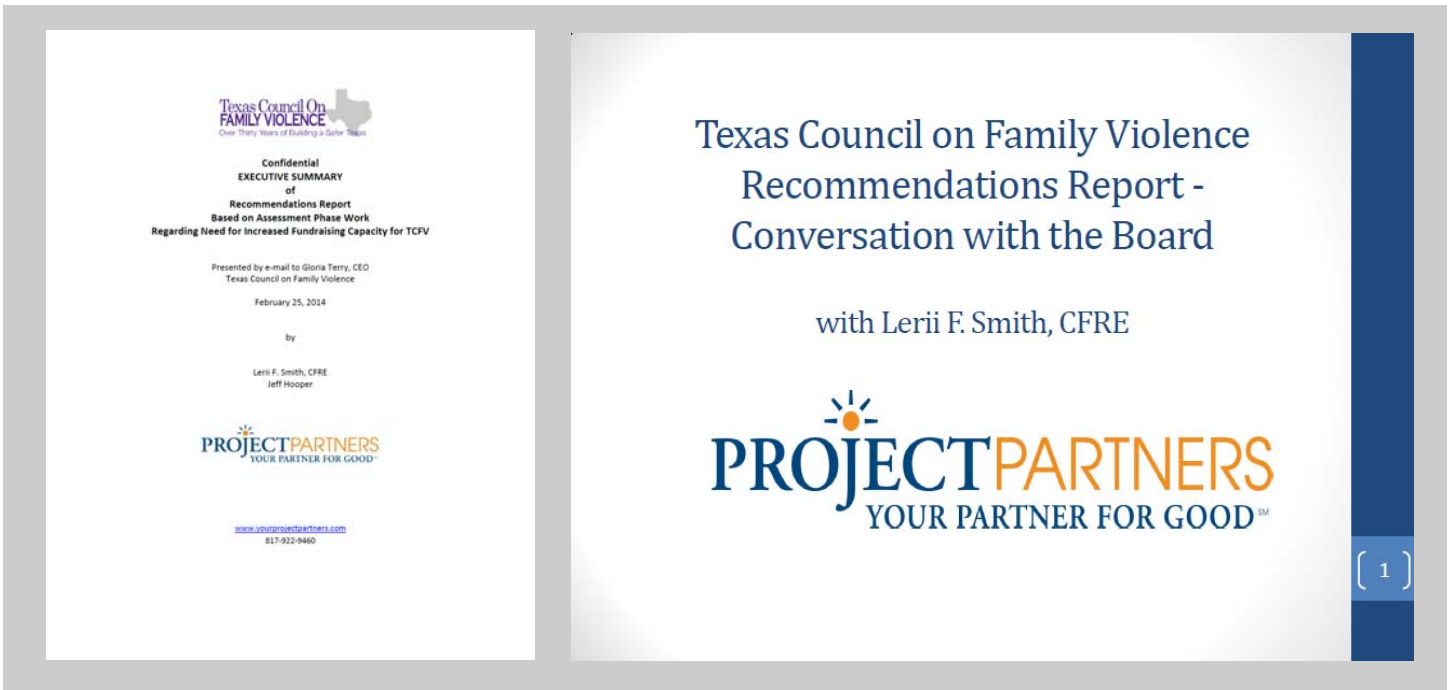

PROJECT PROFILE



**MESSAGING AND DEVELOPMENT CONSULTING
FOR ASSESSMENT PHASE '14**
Texas Council on Family Violence

Provided consulting services during an assessment phase to discover opportunities for TCFV to strengthen its messaging in Austin and across the state, especially with fundraising in mind. Also considered the feasibility of a branded fundraising event and other ways to increase revenues and a staffing needs review to support the recommendations. After research, study, surveys with key stakeholders, and the use of our *Infrastructure for Fundraising Success* tool, we delivered a recommendations report to the CEO and Board of Directors who work tirelessly to build a safer Texas – free from family violence.

“Thank you for the thorough review, positive approach, and specific direction. We are already using the messaging recommendations with very positive results.”

Gloria Aguilera Terry, CEO
Texas Council on Family Violence



WWW.YOURPROJECTPARTNERS.COM
Since 1995 | 817.922.9460